



ImmersiveTouch[®] Simulator

Minimally Invasive and Open procedures



63.25" (H) x 41" (W) x 27.25" (D)
1.6 m (H) x 1.04 m (W) x 0.69 m (D)

- Ventriculostomy and vp shunt
- Trigeminal rhizotomy
- Hematoma removal
- Tumor resection
- Lumbar puncture
- Epidural
- Vertebroplasty
- Percutaneous needle insertion
- Open pedicle screw insertion
- Central line
- Liver tumor biopsy

Demos

- Craniotomy
- Aneurysm clipping
- Cranial bone flap
- Endonasal Pituitary Adenoma

Games

- Stereognosis
- Targeting
- Hemostasis

Create your own simulation

	Premium	Pro	Base
Ventriculostomy and vp shunt	X		
Trigeminal rhizotomy	X		
Hematoma removal	X		
Tumor resection	X		
Lumbar puncture	X	X	X
Epidural	X	X	
Vertebroplasty	X	X	
Percutaneous needle insertion	X	X	
Open pedicle screw insertion	X	X	
Central line	X		X
Liver tumor biopsy	X		X
Demos			
Craniotomy	X	X	X
Aneurysm clipping	X	X	X
Cranial bone flap	X	X	X
Endonasal Pituitary Adenoma	X	X	X
Games			
Stereognosis	X	X	X
Targeting	X	X	X
Hemostasis	X	X	X
Create your own simulation	X		

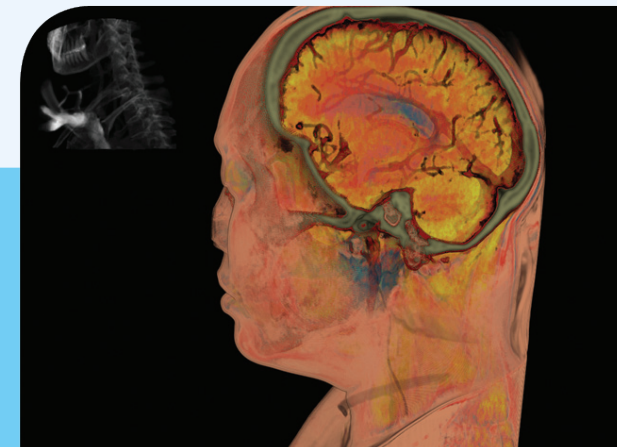
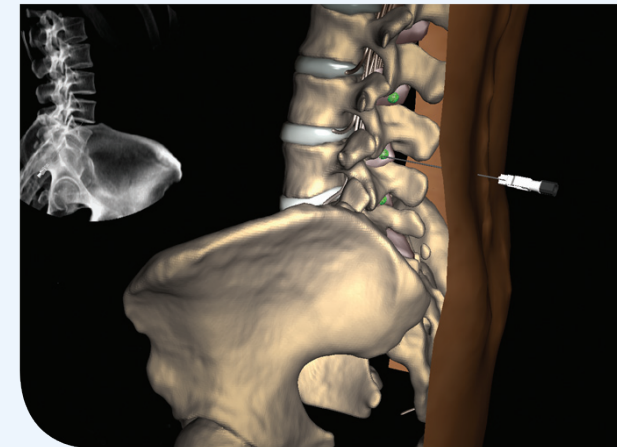
Contact us today for a quote!

ImmersiveTouch[®] Simulator

Support and Maintenance



	Ultimate	Premier	Standard
Parts and labor	X	X	X
Shipping costs	X	X	X
Priority scheduling for repair	X	X	X
Preventative maintenance	X	X	X
Software upgrades	X	X	X
Learning application updates	X	X	X
Customer service	X	X	X
Technical support via remote access	X	X	X
Discount on new products	20%	15%	10%
Two day training for two people at ImmersiveTouch, Inc.	X	X	X
Three non-consecutive days or five consecutive days of training on-site	X	X	
Two days of installation and training	X	X	
Standard price with the purchase of 3+ simulators	X		
Learning management software	X		



All surgical cases were created from original CTs of real patients and approved by practitioners contributing to the development of the procedure.

The ImmersiveTouch[®] simulators are intended as pre-operative software for simulating and evaluating surgical treatment options.

